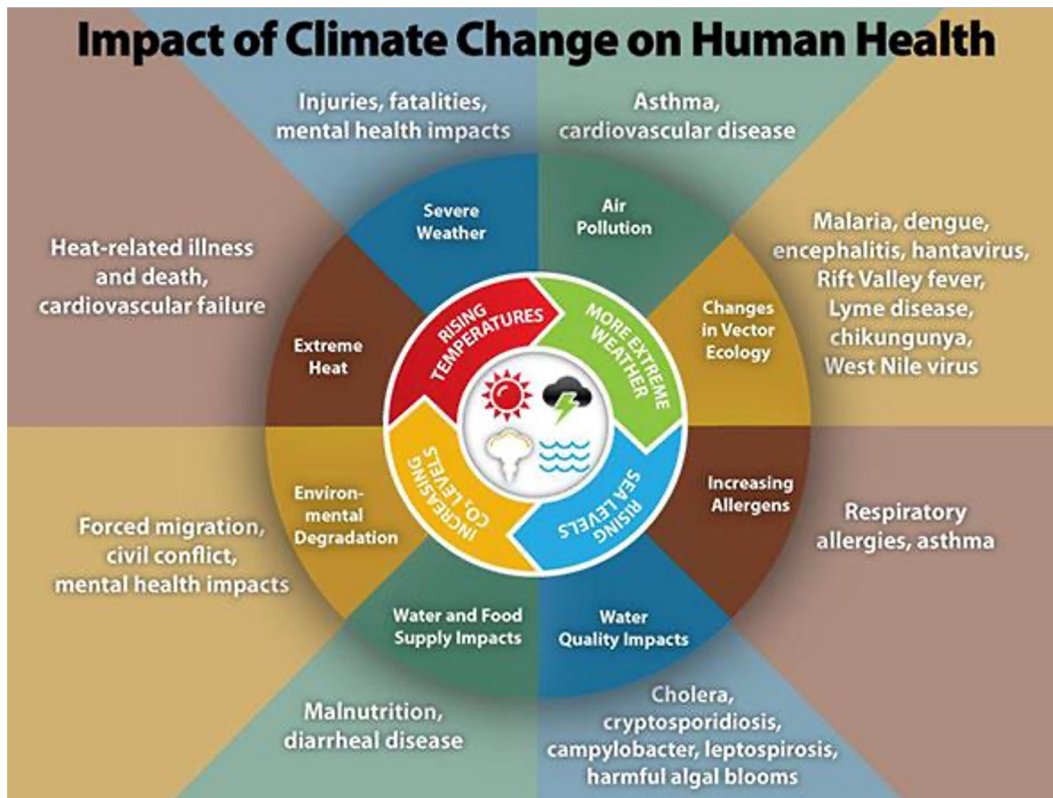


För alla läkare under hela karriären

Climate crisis = health crisis





WORLD
MEDICAL
ASSOCIATION



THE GLOBAL
CLIMATE & HEALTH
ALLIANCE

Sjukhusläkarna



Svensk Förening för
Anestesi och Intensivvård





Nakeyaat Dramani Sam, Ghana,
framförande under COP28; Sharm El-Sheikh

DRAFT TEXT

on

COP 27 overarching decision

Version 18/11/2022 9:00

Draft decisions 1/CP.27 and 1/CMA.4**COP:***The Conference of the Parties,**Recalling decisions 1/CP.19, 1/CP.20, 1/CP.21, 1/CP.22, 1/CP.23, 1/CP.24, 1/CP.25, 1/CP.26,**Noting decision -/CMA.4,***CMA:***The Conference of the Parties serving as the meeting of the Parties to the Paris Agreement,**Recalling Article 2 of the Paris Agreement,**Also recalling decisions 3/CMA.1, 4/CMA.1 and 1/CMA.2,**Noting decision -/CP.27,**Reaffirming our commitment to collective global response to climate change based on latest science and agreed principles, in line with article 2 of the Paris Agreement, recognizing the threat posed by climate change, acknowledging that such threat calls for the widest possible international cooperation in the context of sustainable development and poverty eradication and through just transition pathways,**Acknowledging the global challenges the international community is facing due to overlapping crises of food, energy, cascading risks, geopolitical, financial, debt and economic challenges, compounded and coupled by more frequent and intense climate impacts, all having negative impacts in particular on developing countries,**Recalling Article 2 of the Paris Agreement that stipulates that the Paris Agreement***{Loss and damage}**

38. *Welcomes* the Parties' agreement for the first time to include a sub-agenda item titled "Matters related to funding arrangements responding to loss and damage associated with the adverse effects of climate change including a focus on addressing loss and damage" under agenda item titled "matters related to finance" under COP and CMA, as a reflection of the wide global consensus around the grave situation in relation to loss and damage and the need for effective funding arrangements related to responding to loss and damage in particular addressing loss and damage;



- **Vetenskap**
- **Förebild**
- **Lösning**

**Ingen kan göra allt, men alla kan
göra någonting. Du kanske mer än
de flesta.**

HEALTH CARE'S CLIMATE FOOTPRINT

HOW THE HEALTH SECTOR CONTRIBUTES TO THE GLOBAL CLIMATE CRISIS AND OPPORTUNITIES FOR ACTION

